



*“Chocolat et Crème”
Hand Crafted*



LA ROSE NOIRE
Gérard Dubois
PRE

Swiss Chalet
FINE FOODS

TM

Chocolat et Crème

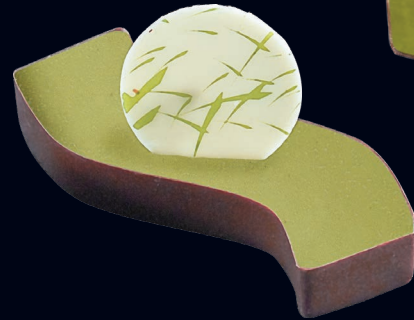
Chocolate Hazelnut

11-12 g/0.39-0.42 oz./pc
H: 10 mm, 0.40 in
L: 62 mm, 2.44 in
W: 24 mm, 0.94 in



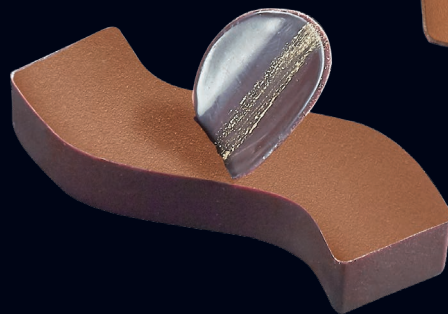
Chocolate Pistachio

11-12 g/0.39-0.42 oz./pc
H: 10 mm, 0.40 in
L: 62 mm, 2.44 in
W: 24 mm, 0.94 in



Milk Chocolate

11-12 g/0.39-0.42 oz./pc
H: 10 mm, 0.40 in
L: 62 mm, 2.44 in
W: 24 mm, 0.94 in



*Size and weight are approximate and should be used as a reference only

*Shelf life: 15 months frozen (-18°C /-0.4°F)

Chocolat et Crème

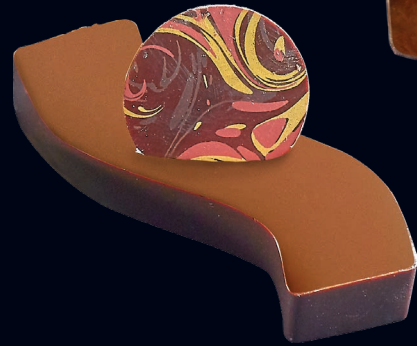
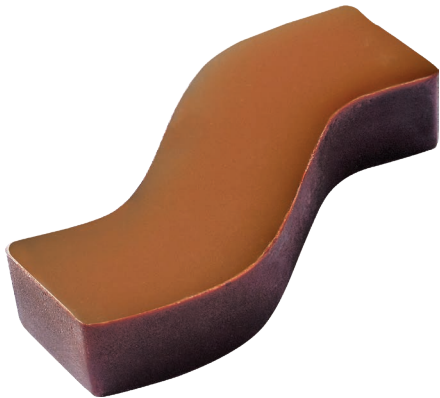
Chocolate Cinnamon

11-12 g/0.39-0.42 oz./pc
H: 10 mm, 0.40 in
L: 62 mm, 2.44 in
W: 24 mm, 0.94 in



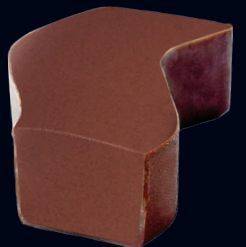
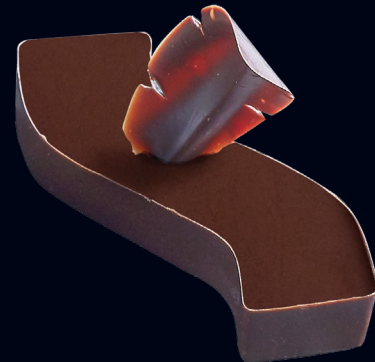
Chocolate Caramel

11-12 g/0.39-0.42 oz./pc
H: 10 mm, 0.40 in
L: 62 mm, 2.44 in
W: 24 mm, 0.94 in



Dark Chocolate

11-12 g/0.39-0.42 oz./pc
H: 10 mm, 0.40 in
L: 62 mm, 2.44 in
W: 24 mm, 0.94 in



*Size and weight are approximate and should be used as a reference only

*Shelf life: 15 months frozen (-18°C /-0.4°F)

Serving Instruction: Defrost at +4°C/+39°F for 4 hours in its original sealed packaging, consume immediately after opening.

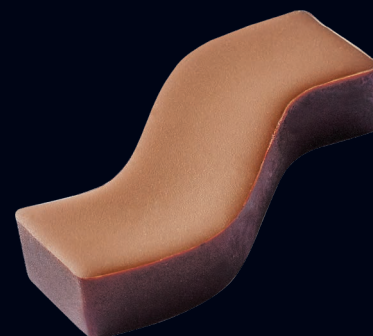
Chocolat et Crème



Chocolate Hazelnut



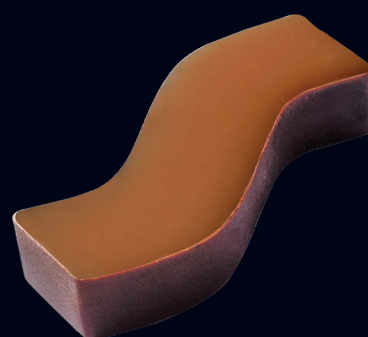
Chocolate Pistachio



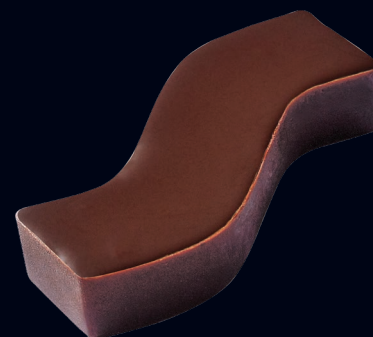
Milk Chocolate



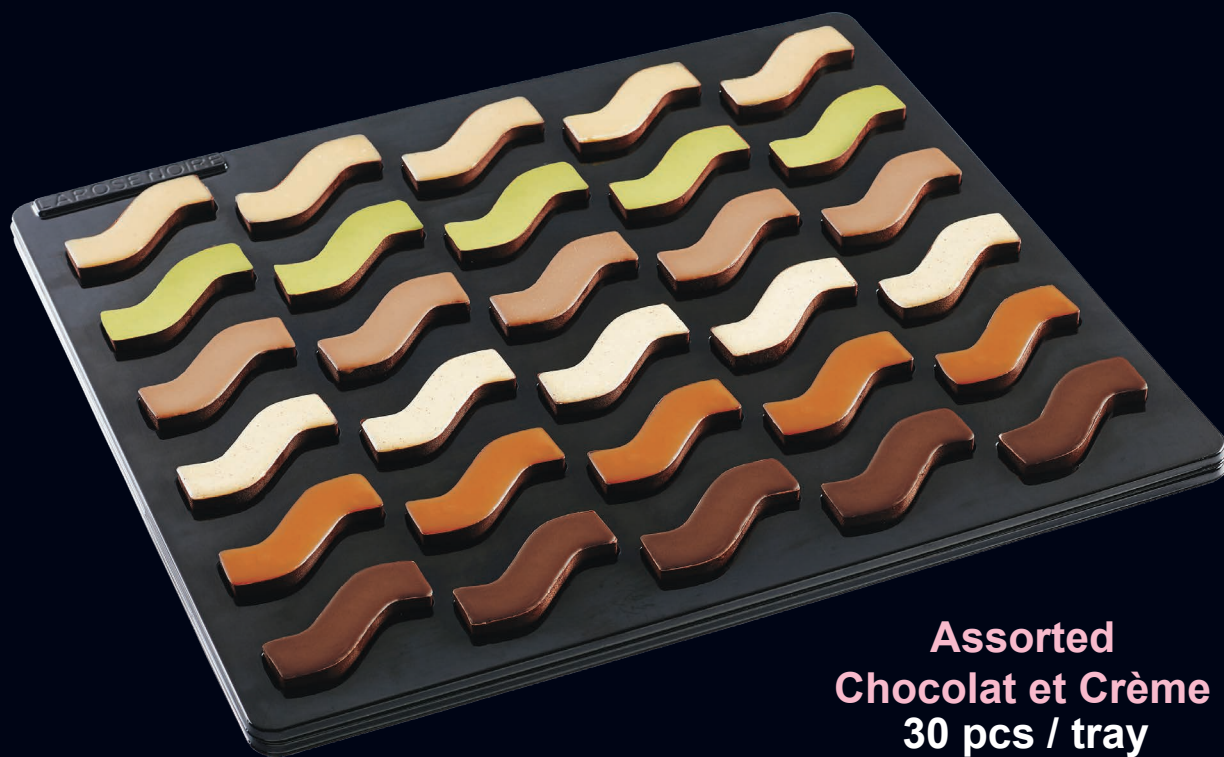
Chocolate Cinnamon



Chocolate Caramel



Dark Chocolate



**Assorted
Chocolat et Crème
30 pcs / tray
4 trays / box
1/120 / case
Item # 967017**